

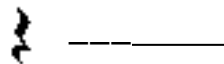
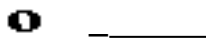
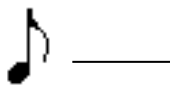
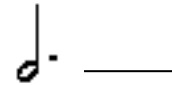
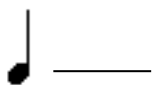
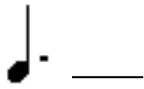
MPHS Written Choral Audition (**Example** - the information will be the same - but may not be in the same order!)

Dynamics: Dynamics in music is like the change in the volume on the radio. Sometimes the music is loud, sometimes soft and sometimes "in-between". The following is a list of dynamics: They are in no specific order. Please match the column to the left with the column to the right to show what each dynamic marking means. Use the number to indicate your answer.

- | | | |
|--------------|-------|-------------|
| 1. <i>mp</i> | _____ | Soft |
| 2. <i>f</i> | _____ | Medium Loud |
| 3. <i>mf</i> | _____ | Loud |
| 4. <i>p</i> | _____ | Medium Soft |

Rhythm: Rhythm is the basis of all music. It is important to know how long to hold a note. Please identify the following notes and rests as to their names. Put the correct number beside the correct note or rest.

- | | | | |
|-----------------|------------------------|---------------------|-----------------|
| 1. half note | 2. Eighth note | 3. Whole note | 4. quarter note |
| 5. quarter rest | 6. Dotted Quarter note | 7. Dotted Half Note | |



Vowels

Vowels are one of the most important things a vocalist must be concerned with. In order for a word to be sung correctly, the proper vowel must be used. Vowels also can affect tone quality, timbre and pitch. For each word below indicate which vowel (of the ten) would be used.

ah- father, a - sat, oo - who, o - boat, ee - read, ih - bit, eh - bet, uh - but, u - put, aw - saw

- | | | | | |
|---------------|---------------|---------------|----------------|----------------|
| 1. Sing _____ | 2. Just _____ | 3. Fall _____ | 4. Seat _____ | 5. moo _____ |
| 6. hat _____ | 7. dope _____ | 8. Lot _____ | 9. soot _____ | 10. sod _____ |
| 11. Hit _____ | 12. The _____ | 13. put _____ | 14. Song _____ | 15. head _____ |

